

MEET KOOT

YOUR PREMIER PARTNER FOR DESIGN AND MANUFACTURING SERVICES.



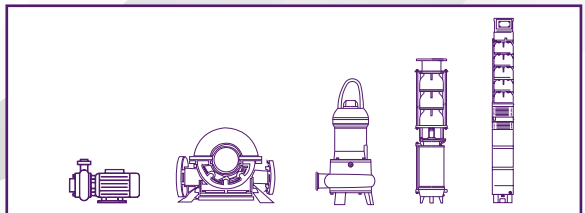
KOOT is a trusted global partner in pumps, drives, valves, and cross-engineering, excelling in design, manufacturing, sales, and after-sales services.



SUB-ASSEMBLIES



COMPREHENSIVE PRODUCT DESIGN AND FULL ASSEMBLY SOLUTIONS



SOLUTIONS & SERVICES



Design and Engineering Services

We offer R&D, NPD, benchmarking, and engineering for leading pump, valve, compressor, and motor manufacturers. Our 50+ engineers specialize in hydraulics, electrical, electronics, and materials, driving product innovation for developed markets.

Business Support Services

Koot provides tailored solutions to enhance your operations. Our offerings include data analytics, market research, marketing, order and product management, graphic design, bookkeeping, HR, and sales support, all designed to help your business succeed.



Procurement and Supply Chain Services

With a network of over 1250 tier 1 & 2 suppliers in Asia, we deliver top-tier sourcing and logistics solutions. Count on Koot to optimize your supply chain, ensuring efficiency and excellence in every part.

Manufacturing & Testing Services

At Koot, we specialize in manufacturing and testing critical components. Our services include the production of parts, sub-assemblies, and complete products, all rigorously tested and ready for assembly or sale.



Complete Product Assembly

We offer comprehensive assembly services, delivering pumps, motors, and valves either as sub-assemblies or fully assembled and packed. Our products are ready for direct shipment to your customers from our factories.



Product Licensing & International Alliances

Koot provides comprehensive licensing and intellectual property protection services to safeguard your innovations. We also cultivate strategic alliances and joint ventures, strengthening our global partnerships with over six major manufacturers of pumps, motors, and valves.

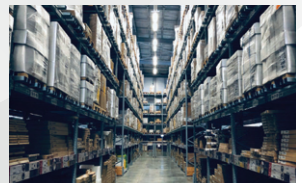


Sales and Aftermarket Services

KOOT delivers deep insights into the Indian market and manufacturing landscape while expanding outreach for international partners. We believe 1+1=11, offering full support across sales, marketing, distribution, and aftermarket services in India and Asia.

Managed Logistics

Leverage KOOT's global logistics for direct shipments to your international subsidiaries and customers. Our team optimizes service and cost, with proactive tracking for visibility and performance. Partnering with top providers, we offer versatile solutions to meet your delivery needs.



CAPABILITIES



DESIGN & ENGINEERING



SUPPLY CHAIN MANAGEMENT



MANUFACTURING & TESTING



GLOBAL LOGISTICS

→ PATTERN & TOOLING SOLUTIONS

→ FERROUS AND NON-FERROUS CASTINGS

→ INTRICATE INVESTMENT CASTINGS

→ FORGED PARTS

→ DIE CASTINGS

→ SHEET METAL FABRICATION

→ PLASTICS & ELASTOMER MOLDING

→ MOTOR STAMPING

→ PRECISION MACHINING

→ 3D PRINTING & PROTOTYPING

→ ADDITIVE MANUFACTURING

→ ADVANCED COATING SOLUTIONS

→ MOTOR WINDING SERVICES

→ IOT AND ELECTRONICS INTEGRATION

→ QUALITY ASSURANCE SERVICES

→ TESTING & VALIDATION



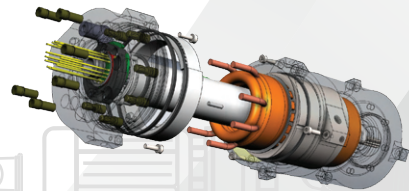
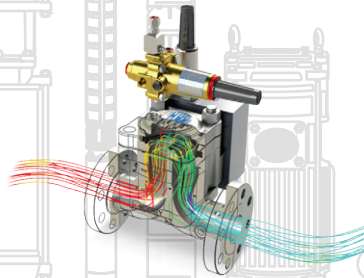
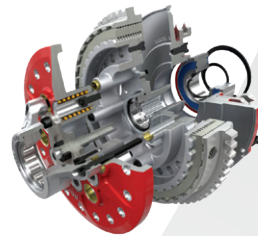
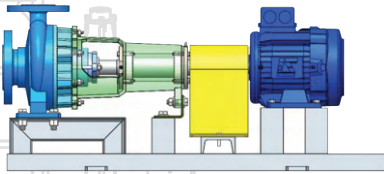
About KOOT

KOOT is your go-to partner for design and manufacturing in the pump, motor, valve, and advanced engineering sectors. With over 40 years of experience and a presence in 25+ countries, we deliver exceptional, sustainable solutions tailored to your needs. Our platform supply chain approach covers design, manufacturing, sales, and after-service, ensuring a seamless and high-quality experience.

- 1 End-to-End Strategic Supplier Platform
- 10+ International Awards
- 40+ Years of Expertise
- 6 Factories on 3 Continents
- 550+ Dedicated Employees
- 1250+ Tier 1 & Tier 2 Suppliers
- 20% Reduction in Costs & Lead Times
- 21+ International Clients
- 25+ Countries Served
- 4000+ Parts & Products Developed

INDUSTRIES WE SERVE:

PUMPS
DRIVES
VALVES
ADVANCED ENGINEERING



Koot has global support centres across the Americas, Asia, and Europe, with India serving as the group's primary manufacturing base.

USA

KOOT
12104 HWY 87, Suite 8
Texas 79423, USA

GERMANY

KOOT
EKKI-HOMA, Industriestraße 1
53819 Neunkirchen-Seelscheid,
Germany

INDIA – GLOBAL HEADQUARTERS

KOOT
The Kanapathy Towers
1391-A1, Sathy Road
Ganapathy, Coimbatore – 641 006
Tamil Nadu, India